

THE HOMES MAGAZINE FOR MODERN LIVING

Livingetc

January 2024 ₹150

INDIA EDITION

*7th anniversary
issue*

**HAFEEZ CONTRACTOR +
SEEMA PURI**

**SONALI RASTOGI +
DEEPANJALI CHAWLA**

**PINAKIN PATEL +
ASHIESH SHAH**

**SANDEEP KHOSLA,
AMARESH ANAND +
DHAVAL SHELLUGAR**
FARAH AHMED MATHIAS,
JATIN HUKKERI,
OOMMEN THOMAS,
IESHA PAREKH SHELLUGAR,
THOMAS JOSE PARAMBIL
AND JUHI PATEL

THE
great
DESIGN.
reunion



CHIC CANVAS

Parisian elegance meets California cool in Residenza Cappellini, a heritage home designed by frenchCALIFORNIA in the heart of Manhattan

WORDS ASHNA LULLA
PHOTOS FEDERICA CARLET



The living space reflects the homeowner's layered and playful style which is brought to life with a mix of vintage details and contemporary Cappellini pieces. Luce side tables made of stratified coloured glass add pops of colour

Two art prints, from the Salomon Art Gallery in Tribeca, grace the wall above a sophisticated grey sectional, the Oblong Plus model from Cappellini. Injecting a hint of playfulness into the space is a stacked multi-coloured cuboid side table as the Luce side tables, also from Cappellini



Located in Manhattan's Financial District, 'Residenza Cappellini' is a heritage home designed by interior and branding firm frenchCALIFORNIA. A chance meeting between Cappellini's art director, Giulio Cappellini, and frenchCALIFORNIA's founder and creative director Guillaume Coutheillas, revealed a shared design ethos. Not long after, the synergy between the two powerhouses found its perfect expression in this 2476 sq.ft, terrace penthouse.

Working within an iconic heritage building, design practice frenchCALIFORNIA focused on binding the old and new through a considered, timeless approach. "Imagined for a well-travelled, global citizen, the apartment's aesthetic responded to the homeowner's elevated taste and passion for art, rather than speaking directly to the historic architecture," Coutheillas explains. Embracing the open floor plan, the designer has staged moments that flow through from one into the next using furniture and art. He has effortlessly married vintage details with contemporary Cappellini pieces, including the famed outdoor Lido Collection, headlined by the Litos sofa. It is a stunning ensemble where nothing matches, yet everything belongs. An organic matte-velvet limewash finish paint has a pronounced effect on the apartment, giving the space a lived-in

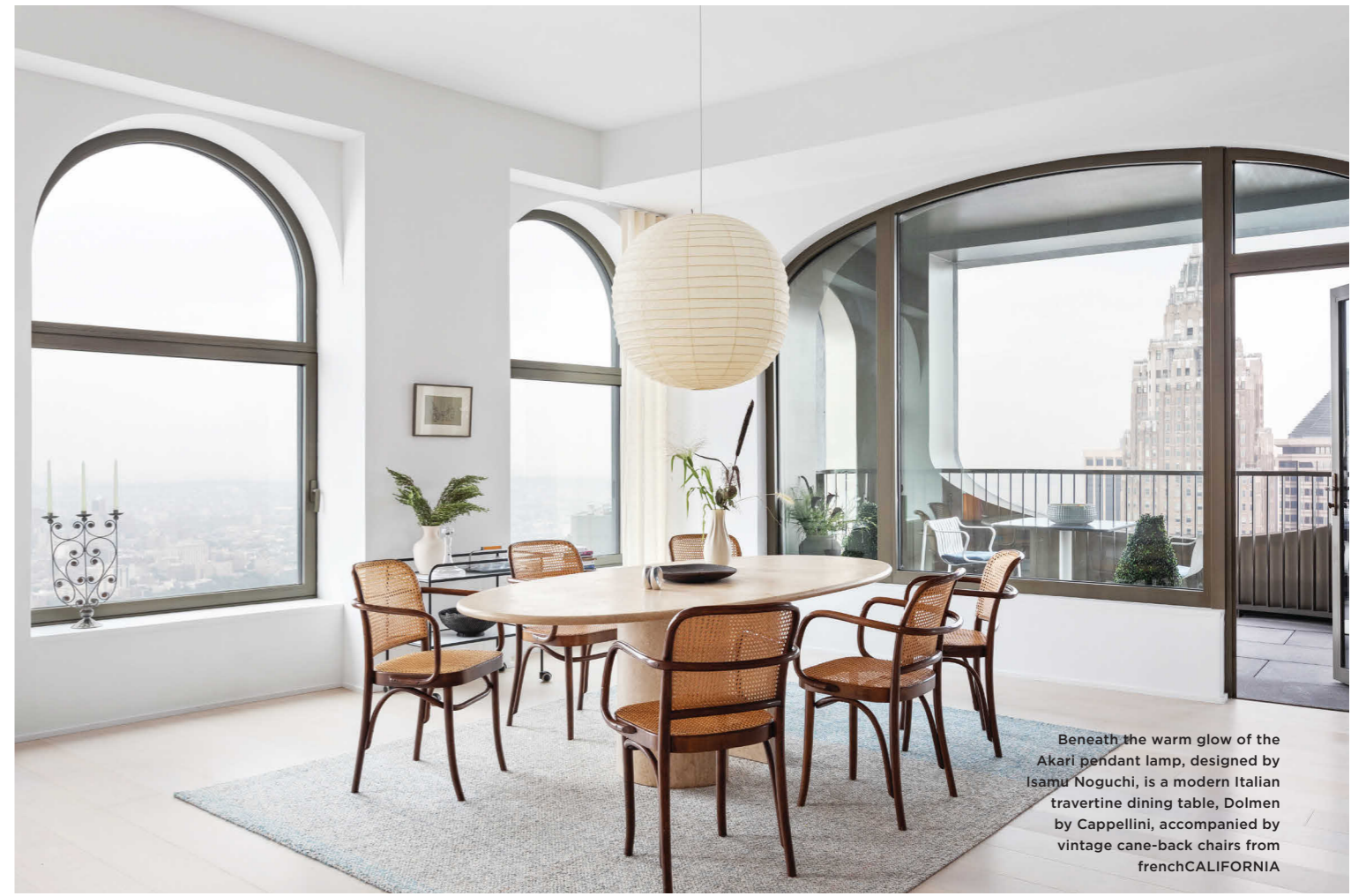
vibe. Coutheillas explains the right paint finish, reflects light gently, sets the tone, and offsets the colourful contemporary artworks and furnishings.

The designers imparted openness, lightness and connection by opening the living space to the dining, kitchen, and lush terrace. Oak flooring, steel-grey cabinetry, and a soft, neutral palette allow pops of vivid colours to take centre stage. The interior design strikes a delicate balance, drawing inspiration from the buttoned-up Parisian aesthetic, and the laid-back charm synonymous with California living. Coutheillas attributes the expert curation of the space to the homeowners, who envisioned "art as furniture and furniture as art." A pair of chocolate-brown armchairs and gorgeous lamps from Foscarini anchor the living room. The dining space echoes a conversation between past and present – vintage cane chairs are paired with a Cappellini's Dolmen travertine table, all illuminated by an Isamu Noguchi Akari light from The Noguchi Museum. Bold, colourful and accessible art from Salomon Arts Gallery, is a common thread across the spaces.

The home's private spaces feature a tonal palette of crisp whites, greys, and hints of blue framing the deeper materials, such as marble nightstands, colourful art, and grey-framed windows. Residenza Cappellini pays homage to the past while respectfully layering contemporary gestures to create a sense of warmth and sophistication. ♦ frenchca.com

HOME MANHATTAN

Marc Newson's iconic Embryo chairs pair well with a custom Edifice rug, designed by Marc Thorpe. Completing the vignette are a pedestal table and a round mirror



Beneath the warm glow of the Akari pendant lamp, designed by Isamu Noguchi, is a modern Italian travertine dining table, Dolmen by Cappellini, accompanied by vintage cane-back chairs from frenchCALIFORNIA



Here, we see the dining room again, but this time, the Italian travertine dining table is paired with stylish bucket seat armchairs, San Siro by Jasper Morrison

“Imagined for a well-travelled, global citizen, the apartment’s aesthetic responded to the homeowner’s elevated taste and passion for art, rather than speaking directly to the historic architecture”

Arch-shaped windows flood the bedroom with natural light, and an upholstered beige bed from Cappellini, is dressed in soft bed linen. The Lud’o Lounge by Patricia Urquiola sits in the corner

Against the backdrop of Manhattan's skyline, Jasper Morrison's classic Thinking Man's Chair, furnishes the breathtaking terraces of Residenza Cappellini



A bespoke wall covering from Colorwash and Lyric Doric collections by Brooklyn-based Calico Wallpaper wraps the study. The Aliante bookshelf by Rodolfo Dordoni and Cappellini is curated tastefully

THE ONE DECOR PIECE IN THE HOME THAT EVERYONE SHOULD HAVE?

A Noguchi light from The Noguchi Museum.

IF THIS HOME WAS A METAPHOR FOR AN EMOTION, WHAT WOULD THAT BE?

Enthusiasm...with its colourful decor, eclectic curation and modern architecture.

A GO-TO SPOT IN THE HOME?

The open living room and dining area is a great space for entertaining and to enjoy the sweeping views of Manhattan.

WHERE CAN YOU CATCH THE BEST LIGHT IN THE HOME?

The open floor plan allows for amazing natural light to reach most areas of the house, but the living room and kitchen, with floor-to-ceiling windows, get incredible light.

frenchCALIFORNIA, led by its Parisian founder and creative director, Guillaume Coutheillas, is a globally acclaimed interior design and branding studio, renowned for crafting stunning commercial and residential spaces. Embracing a multicultural ethos, the team breathes diversity into their work, spanning turnkey residential renovations, commercial interiors, art curation and residential staging.